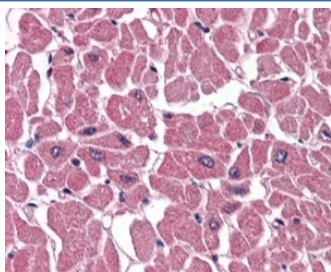


## ABTB1 Antibody (R35534)

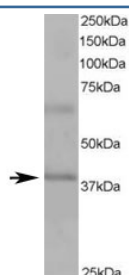
Catalog No.	Formulation	Size
R35534-100UG	0.5 mg/ml in 1X TBS, pH7.3, with 0.5% BSA (US sourced) and 0.02% sodium azide	100 ug

[Bulk quote request](#)

Availability	1-3 business days
Species Reactivity	Human
Predicted Reactivity	Mouse, Rat, Dog
Format	Antigen affinity purified
Clonality	Polyclonal (goat origin)
Isotype	Goat Ig
Purity	Antigen affinity
Gene ID	80325
Applications	Western Blot : 1-3ug/ml Immunohistochemistry (FFPE) : 3-5ug/ml ELISA (peptide) LOD : 1:32000
Limitations	This ABTB1 antibody is available for research use only.



IHC staining of FFPE human heart with ABTB1 antibody at 4ug/ml. HIER: steamed with pH6 citrate buffer, AP-staining.



Western blot testing of human heart lysate with ABTB1 antibody at 1ug/ml. Predicted molecular weight ~38/54 kDa (isoforms 1/2).

## Description

Additional name(s) for this target protein: Ankyrin repeat and BTB (POZ) domain containing 1, BPOZ

## Application Notes

Optimal dilution of the ABTB1 antibody should be determined by the researcher.

## Immunogen

Amino acids RALEDLLVSIGLDC were used as the immunogen for this ABTB1 antibody.

## Storage

Aliquot and store the ABTB1 antibody at -20oC.