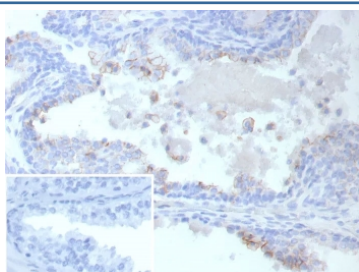


## ABCC4 Antibody / MRP4 [clone ABCC4/9019] (V5381)

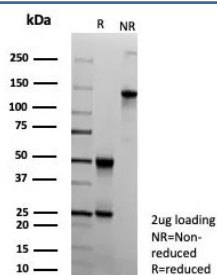
Catalog No.	Formulation	Size
V5381-100UG	0.2 mg/ml in 1X PBS with 0.1 mg/ml BSA (US sourced), 0.05% sodium azide	100 ug
V5381-20UG	0.2 mg/ml in 1X PBS with 0.1 mg/ml BSA (US sourced), 0.05% sodium azide	20 ug
V5381SAF-100UG	1 mg/ml in 1X PBS; BSA free, sodium azide free	100 ug

[Bulk quote request](#)

<b>Availability</b>	1-3 business days
<b>Species Reactivity</b>	Human
<b>Format</b>	Purified
<b>Clonality</b>	Monoclonal (mouse origin)
<b>Isotype</b>	Mouse IgG2b, kappa
<b>Clone Name</b>	ABCC4/9019
<b>Purity</b>	Protein A/G affinity
<b>UniProt</b>	O15439
<b>Localization</b>	Membrane
<b>Applications</b>	Immunohistochemistry (FFPE) : 1-2ug/ml
<b>Limitations</b>	This ABCC4 antibody is available for research use only.



IHC staining of FFPE human prostate cancer tissue with ABCC4 antibody (clone ABCC4/9019). Inset: PBS used in place of primary Ab (secondary Ab negative control).



SDS-PAGE analysis of purified, BSA-free ABCC4 antibody (clone ABCC4/9019) as confirmation of integrity and purity.

## Description

ATP-dependent transporter of the ATP-binding cassette (ABC) family that actively extrudes physiological compounds and xenobiotics from cells. Transports a range of endogenous molecules that have a key role in cellular communication and signaling, including cyclic nucleotides such as cyclic AMP (cAMP) and cyclic GMP (cGMP), bile acids, steroid conjugates, urate, and prostaglandins. [UniProt]

## Application Notes

Optimal dilution of the ABCC4 antibody should be determined by the researcher.

## Immunogen

A recombinant fragment (within amino acids 1-200) of human ABCC4 protein was used as the immunogen for the ABCC4 antibody.

## Storage

Aliquot the ABCC4 antibody and store frozen at -20oC or colder. Avoid repeated freeze-thaw cycles.