

ABCB11 Antibody (R31844)

Catalog No.	Formulation	Size
R31844	0.5mg/ml if reconstituted with 0.2ml sterile DI water	100 ug



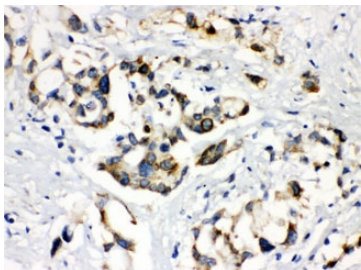
Citations (2)

[Bulk quote request](#)

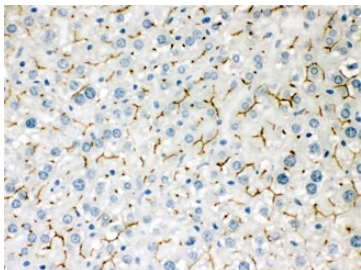
Availability	1-3 business days
Species Reactivity	Human, Mouse, Rat
Format	Antigen affinity purified
Clonality	Polyclonal (rabbit origin)
Isotype	Rabbit IgG
Purity	Antigen affinity
Buffer	Lyophilized from 1X PBS with 2.5% BSA and 0.025% sodium azide
UniProt	O95342
RRID	AB_2725751
Localization	Membrane
Applications	Western Blot : 0.1-0.5ug/ml Immunohistochemistry (FFPE) : 0.5-1ug/ml Immunofluorescence (FFPE) : 1-2ug/ml
Limitations	This ABCB11 antibody is available for research use only.



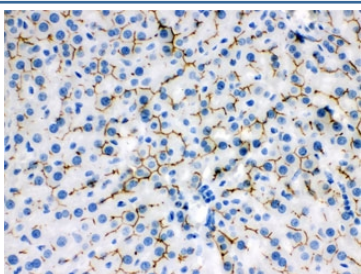
Western blot testing of 1) rat liver, 2) mouse liver and 3) human SMMC lysate with ABCB11 antibody. Expected/observed molecular weight ~146 kDa.



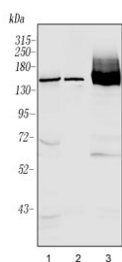
IHC testing of FFPE human liver cancer with ABCB11 antibody. HIER: Boil the paraffin sections in pH 6, 10mM citrate buffer for 20 minutes and allow to cool prior to staining.



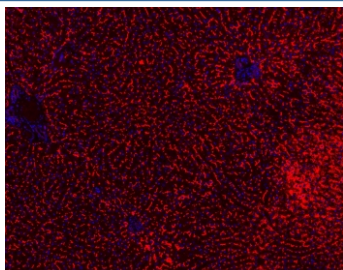
IHC testing of FFPE mouse liver with ABCB11 antibody. HIER: Boil the paraffin sections in pH 6, 10mM citrate buffer for 20 minutes and allow to cool prior to staining.



IHC testing of FFPE rat liver with ABCB11 antibody. HIER: Boil the paraffin sections in pH 6, 10mM citrate buffer for 20 minutes and allow to cool prior to staining.



Western blot testing of 1) human HCCT 2) rat liver and 3) mouse liver lysate with ABCB11 antibody. Expected/observed molecular weight ~146 kDa.



Immunofluorescent staining of FFPE mouse liver with ABCB11 antibody (red) and DAPI counterstain (blue). HIER: Boil the paraffin sections in pH 6, 10mM citrate buffer for 20 minutes and allow to cool prior to staining.

Description

Bile Salt Export Pump (BSEP) is a protein which in humans is encoded by the ABCB11 gene. It is a member of the superfamily of ATP-binding cassette (ABC) transporters, also known as ABCB11. It is mapped to chromosome 2q24. The BSEP protein is mainly expressed in the liver. ABCB11 is a gene associated with progressive familial intrahepatic cholestasis type 2 (PFIC2) which caused by mutations in the ABCB11 gene will increases the risk of hepatocellular carcinoma in early life.

Application Notes

Optimal dilution of the ABCB11 antibody should be determined by the researcher.

Immunogen

Amino acids KYGDNTKEIPMERVIAAAKQAQLHD of human ABCB11 were used as the immunogen for the ABCB11 antibody.

Storage

After reconstitution, the ABCB11 antibody can be stored for up to one month at 4°C. For long-term, aliquot and store at -20°C. Avoid repeated freezing and thawing.