

A2ML1 Antibody (F48844)

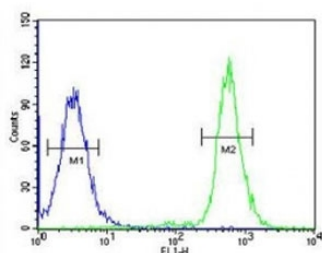
Catalog No.	Formulation	Size
F48844-0.4ML	In 1X PBS, pH 7.4, with 0.09% sodium azide	0.4 ml
F48844-0.08ML	In 1X PBS, pH 7.4, with 0.09% sodium azide	0.08 ml

Bulk quote request

Availability	1-3 business days
Species Reactivity	Human, Mouse
Format	Antigen affinity purified
Clonality	Polyclonal (rabbit origin)
Isotype	Rabbit Ig
Purity	Antigen affinity
UniProt	A8K2U0
Applications	Western Blot : 1:1000 Flow Cytometry : 1:10-1:50
Limitations	This A2ML1 antibody is available for research use only.

250
130
95
72

Western blot analysis of A2ML1 antibody and mouse lung tissue lysate. Predicted molecular weight ~161 kDa.



A2ML1 antibody flow cytometric analysis of 293 cells (right histogram) compared to a [negative control](#) (left histogram). FITC-conjugated goat-anti-rabbit secondary Ab was used for the analysis.

Description

A2ML1 is a new member of the alpha 2-macroglobulin protease inhibitor family, and shares most the characteristics of this family. It is the first family member detected in the epidermis and may play an important role during desquamation by inhibiting extracellular proteases.

Application Notes

Titration of the A2ML1 antibody may be required due to differences in protocols and secondary/substrate sensitivity.

Immunogen

A portion of amino acids 345-373 from the human protein was used as the immunogen for this A2ML1 antibody.

Storage

Aliquot the A2ML1 antibody and store frozen at -20oC or colder. Avoid repeated freeze-thaw cycles.