

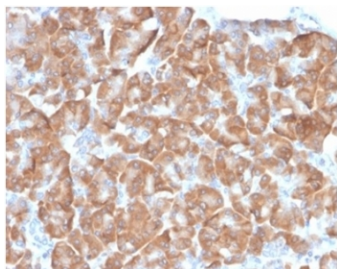
## 40S Ribosomal protein SA Antibody / RPSA / Laminin Receptor 1 [clone RPSA/6332R] (V9408)

Catalog No.	Formulation	Size
V9408-100UG	0.2 mg/ml in 1X PBS with 0.1 mg/ml BSA (US sourced), 0.05% sodium azide	100 ug
V9408-20UG	0.2 mg/ml in 1X PBS with 0.1 mg/ml BSA (US sourced), 0.05% sodium azide	20 ug
V9408SAF-100UG	1 mg/ml in 1X PBS; BSA free, sodium azide free	100 ug

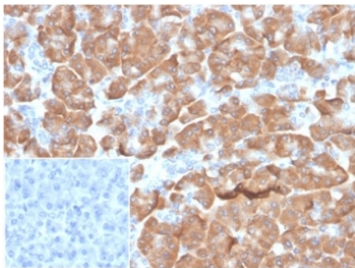
Recombinant **RABBIT MONOCLONAL**

[Bulk quote request](#)

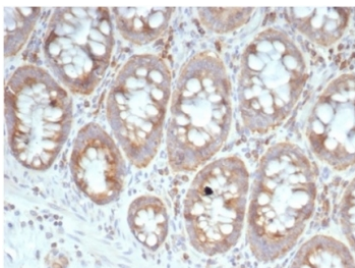
<b>Availability</b>	1-3 business days
<b>Species Reactivity</b>	Human
<b>Format</b>	Purified
<b>Clonality</b>	Recombinant Rabbit Monoclonal
<b>Isotype</b>	Rabbit IgG, kappa
<b>Clone Name</b>	RPSA/6332R
<b>Purity</b>	Protein A/G affinity
<b>UniProt</b>	P08865
<b>Localization</b>	Cell Surface, Cytoplasmic, Nuclear
<b>Applications</b>	Immunohistochemistry (FFPE) : 1-2ug/ml
<b>Limitations</b>	This 40S Ribosomal protein SA antibody is available for research use only.



IHC staining of FFPE human pancreas with 40S Ribosomal protein SA antibody (clone RPSA/6332R). HIER: boil tissue sections in pH 9 10mM Tris with 1mM EDTA for 20 min and allow to cool before testing.



IHC staining of FFPE human pancreatic tissue with 40S Ribosomal protein SA (clone RPSA/6332R). Negative control inset: PBS instead of primary antibody to control for secondary binding. HIER: boil tissue sections in pH 9 10mM Tris with 1mM EDTA for 20 min and allow to cool before testing.



IHC staining of FFPE human colon tissue with 40S Ribosomal protein SA (clone RPSA/6332R). HIER: boil tissue sections in pH 9 10mM Tris with 1mM EDTA for 20 min and allow to cool before testing.

## Description

Laminins, a family of extracellular matrix glycoproteins, are the major non-collagenous constituent of basement membranes. They have been implicated in a wide variety of biological processes including cell adhesion, differentiation, migration, signaling, neurite outgrowth and metastasis. Many of the effects of laminin are mediated through interactions with cell surface receptors. These receptors include members of the integrin family, as well as non-integrin laminin-binding proteins. This gene encodes a high-affinity, non-integrin family member, 40S Ribosomal protein SA, also called Laminin receptor 1. Reportedly, level of laminin receptor transcript is higher in colon carcinoma tissue and lung cancer cell line than their normal counterparts. Also, there is a correlation between the upregulation of this polypeptide in cancer cells and their invasive and metastatic phenotype.

## Application Notes

Optimal dilution of the 40S Ribosomal protein SA antibody should be determined by the researcher.

## Immunogen

Recombinant full-length human RPSA protein was used as the immunogen for the 40S Ribosomal protein SA antibody.

## Storage

Aliquot the 40S Ribosomal protein SA antibody and store frozen at -20oC or colder. Avoid repeated freeze-thaw cycles.