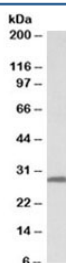


## 14-3-3 sigma Antibody (R33530)

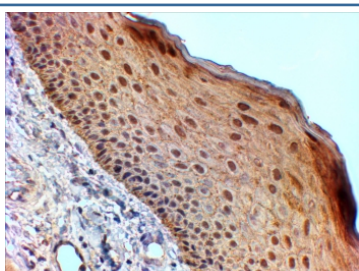
Catalog No.	Formulation	Size
R33530-100UG	0.5 mg/ml in 1X TBS, pH7.3, with 0.5% BSA (US sourced) and 0.02% sodium azide	100 ug

[Bulk quote request](#)

Availability	1-3 business days
Species Reactivity	Human
Predicted Reactivity	Dog, Mouse, Pig, Rat
Format	Antigen affinity purified
Clonality	Polyclonal (goat origin)
Isotype	Goat Ig
Purity	Antigen affinity
Gene ID	2810
Applications	Western Blot : 0.03-0.1ug/ml Immunohistochemistry (FFPE) : suitable ELISA (peptide) LOD : 1:16000
Limitations	This 14-3-3 sigma antibody is available for research use only.



Western blot testing of human skin lysate with 14-3-3 sigma antibody at 0.03ug/ml.  
Predicted molecular weight: ~28kDa.



IHC staining of FFPE human skin with 14-3-3 sigma antibody at 2ug/ml. HIER: steamed with pH9 Tris/EDTA buffer, HRP-staining.

## Description

Additional name(s) for this target protein: Stratifin; SFN

## Application Notes

Optimal dilution of the 14-3-3 sigma antibody should be determined by the researcher.

## Immunogen

Amino acids DLHTLSEDSYKDST were used as the immunogen for this 14-3-3 sigma antibody.

## Storage

Aliquot and store the 14-3-3 sigma antibody at -20oC.