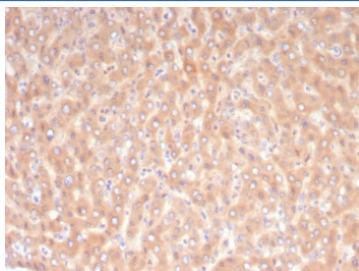


## 10-Formyltetrahydrofolate dehydrogenase Antibody / ALDH1L1 [clone ALDH1L1/7968] (V5388)

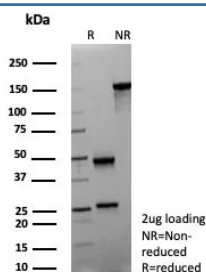
Catalog No.	Formulation	Size
V5388-100UG	0.2 mg/ml in 1X PBS with 0.1 mg/ml BSA (US sourced), 0.05% sodium azide	100 ug
V5388-20UG	0.2 mg/ml in 1X PBS with 0.1 mg/ml BSA (US sourced), 0.05% sodium azide	20 ug
V5388SAF-100UG	1 mg/ml in 1X PBS; BSA free, sodium azide free	100 ug

### Bulk quote request

Availability	1-3 business days
Species Reactivity	Human
Format	Purified
Clonality	Monoclonal (mouse origin)
Isotype	Mouse IgG1, kappa
Clone Name	ALDH1L1/7968
Purity	Protein A/G affinity
UniProt	O75891
Localization	Cytoplasm
Applications	Immunohistochemistry (FFPE) : 1-2ug/ml
Limitations	This 10-Formyltetrahydrofolate dehydrogenase antibody is available for research use only.



IHC staining of FFPE human liver tissue with 10-Formyltetrahydrofolate dehydrogenase antibody (clone ALDH1L1/7968). HIER: boil tissue sections in pH 9 10mM Tris with 1mM EDTA for 20 min and allow to cool before testing.



SDS-PAGE analysis of purified, BSA-free 10-Formyltetrahydrofolate dehydrogenase antibody (clone ALDH1L1/7968) as confirmation of integrity and purity.

## Description

Aldehyde dehydrogenases (ALDHs) mediate NADP<sup>+</sup>-dependent oxidation of aldehydes into acids during detoxification of alcohol-derived acetaldehyde, lipid peroxidation and metabolism of corticosteroids, biogenic amines and neurotransmitters. ALDH1L1 (aldehyde dehydrogenase 1 family member L1), also known as FTHFD or 10-FTHFD (10-formyltetrahydrofolate dehydrogenase), is a cytosolic protein that is developmentally regulated in the cerebellum. ALDH1L1 binds to folate and catalyzes the conversion of 10-formyltetrahydrofolate (10-FTHF) to tetrahydrofolate (THF). This suggests a possible role for ALDH1L1 in the regulation of cellular THF levels as well as in the inhibition of cell proliferation (as 10-FTHF is essential for the synthesis of purine). In addition, the overexpression of ALDH1L1 can restrict cell proliferation in vitro.

## Application Notes

Optimal dilution of the 10-Formyltetrahydrofolate dehydrogenase antibody should be determined by the researcher.

## Immunogen

A recombinant fragment of human ALDH1L1 protein was used as the immunogen for the 10-Formyltetrahydrofolate dehydrogenase antibody.

## Storage

Aliquot the 10-Formyltetrahydrofolate dehydrogenase antibody and store frozen at -20°C or colder. Avoid repeated freeze-thaw cycles.